









# Seamlessly brilliant video walls.

Extremely Thin Bezels for Virtually Seamless Video Walls Deliver deeper visual impact with extreme narrow bezel video walls from **DigiJupiter**. Featuring a **bezel-to-bezel width of just 1.8mm**, these 55" and 49" displays will create a virtually seamless picture across multiple screens, for incredible impact. Factory calibration ensures consistent, natural color, while non-glare glass makes sure bright reflections don't get in the way of your beautiful message.



## Key Features

- 
**Bezel-to-Bezel Measurement of 1.8mm**  
 Create virtually seamless video walls and deliver deeper visual impact. Extreme narrow bezel video walls feature a **bezel-to-bezel width of just 1.8mm**, for a near-seamless and captivating picture across multiple screens without interruption.
- 
**Achieve Brilliant, Glare-Free Picture Quality**  
 Combined with a bright, non-glare panel, the extreme narrow bezel video wall delivers memorable content even under ambient light.
- 
**Reliable 24/7 Continuous Long-Term Operation**  
 With continuous 24/7 operation, you can deliver vivid messages around the clock, without worrying about darkening panels.
- 
**Conformal Coating**  
 The product can be often unavoidably exposed to dust and water during maintenance. Conformal coating on major circuit board eliminates such circumstances by protecting it against dust, iron powder, humidity, etc.
- 
**Clear View with Non-glare Coating**  
 Viewers can be annoyed by unnecessary reflections when watching a screen under brightly lit conditions. The DJS series has resolved such inconveniences by increasing the level of haze, which enhances visibility and text readability.
- 
**Wide Viewing Angle**  
 Panel technology provides better control of the liquid crystals, which in turn allows the screen to be viewed at virtually any angles. So it delivers stable and accurate colors no matter where viewers are.

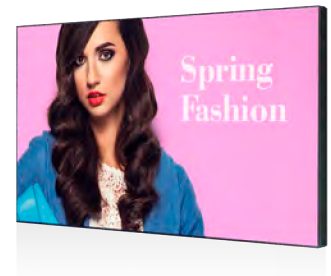
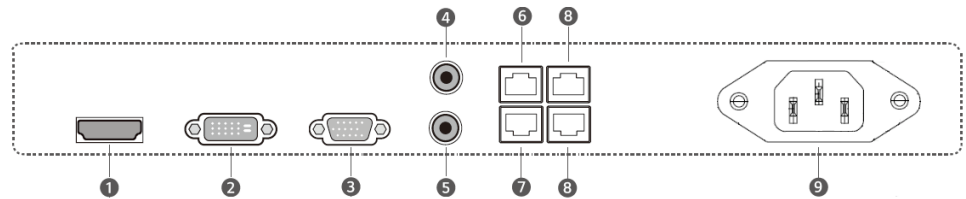
# Digijupiter UL/UH Extreme Narrow Bezel Video Wall Displays



			DJS-UL049	DJS-UL055	DJS-UH049	DJS-UH055
Panel	Diagonal Size	Class	49"	55"	49"	55"
	Type		LED	LED	LED	LED
	Resolution		1920 x 1080	1920 x 1080	1920 x 1080	1920 x 1080
	Pixel Pitch (mm)		0.56mm (H) x 0.56mm (V)	0.63mm (H) x 0.63mm (V)	0.56mm (H) x 0.56mm (V)	0.63mm (H) x 0.63mm (V)
	Active Display Area (mm)		1073.8mm x 604mm	1209.6mm x 680.4mm	1073.8mm x 604mm	1209.6mm x 680.4mm
	Brightness		500 nits	500 nits	700 nits	700 nits
	Contrast Ratio		1300:1	1400:1	1300:1	1400:1
	Viewing Angle (H/V)		178/178	178/178	178/178	178/178
	Response Time (G-to-G)		8ms	8ms	8ms	8ms
	Display Colors		8 bit - 16.7M	8 bit - 16.7M	8 bit - 16.7M	8 bit - 16.7M
	Color Gamut		72%	72%	72%	72%
Panel Orientation		Landscape / Portrait	Landscape / Portrait	Landscape / Portrait	Landscape / Portrait	
Display Color		1677	1677	1677	1677	
Operation Hour		24/7	24/7	24/7	24/7	
Connectivity	Input	RGB	VGA, CVBS, DVI-D	VGA, CVBS, DVI-D	VGA, CVBS, DVI-D	VGA, CVBS, DVI-D
		Video	HDMI	HDMI	HDMI	HDMI
		HDCP	HDCP	HDCP	HDCP	HDCP
	External Control		RS232 (In / Out), RJ45	RS232 (In / Out), RJ45	RS232 (In / Out), RJ45	RS232 (In / Out), RJ45
External Sensor		(IR, ISP),RJ45	(IR, ISP),RJ45	(IR, ISP),RJ45	(IR, ISP),RJ45	
Power	Type		Internal	Internal	Internal	Internal
	Power Supply		AC 100 - 240 V~ (+/- 10 %), 50/60 Hz	AC 100 - 240 V~ (+/- 10 %), 50/60 Hz	AC 100 - 240 V~ (+/- 10 %), 50/60 Hz	AC 100 - 240 V~ (+/- 10 %), 50/60 Hz
	Power Consumption	Max(W) Off Mode	160W < 0.5W	200W < 0.5W	160W < 0.5W	240W < 0.5W
Dimensions	Set Dimension (W x H x D)		1075.58 x 605.8	1211.4 x 682.2	1075.58 x 605.8	1211.4 x 682.2
	Weight		25kg	30kg	25kg	30kg
Operation	Operating Temperature		0°C~ 50°C	0°C~ 50°C	0°C~ 50°C	0°C~ 50°C
	Humidity		10~80%	10~80%	10~80%	10~80%
Features	Key		Extreme Narrow Bezel	Extreme Narrow Bezel	Extreme Narrow Bezel	Extreme Narrow Bezel
	Language		Support Multi-language			

## Connectivity

- HDMI IN
- DVI-D
- VGA
- CVBS OUT
- CVBS IN
- ISP/IR
- RS232 IN
- RS232 OUT
- AC Power IN



Learn More  
Contact Us

[www.Digijupiter.com](http://www.Digijupiter.com)  
[Hsu@digijupiter.com](mailto:Hsu@digijupiter.com)

