

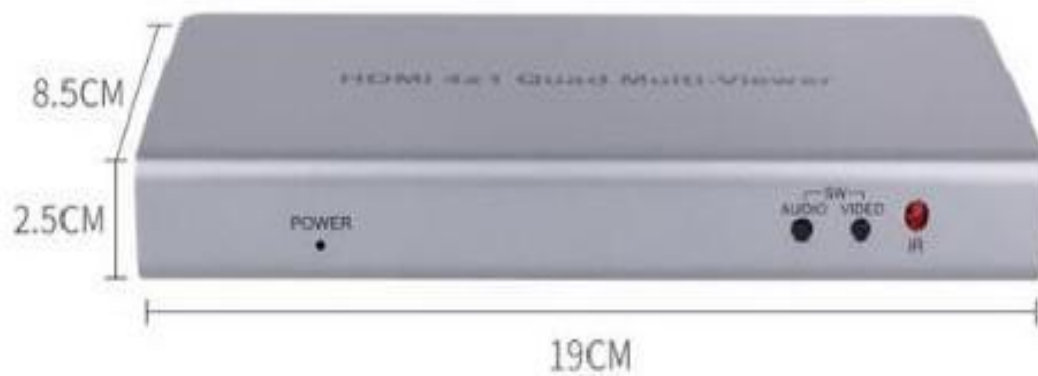


Full HD Video Wall Controller

DJV-410(Multi-Viewer)

DJV- 410 4 in 1 Video Wall Controller

Photos:

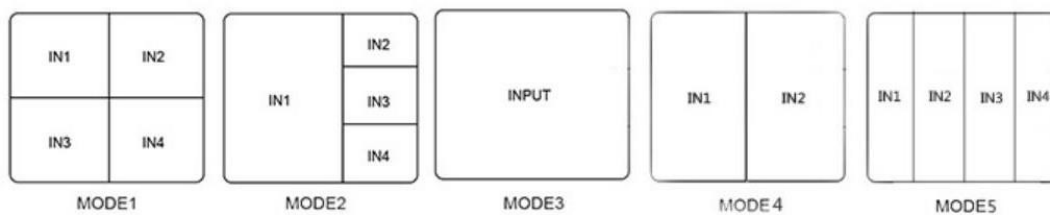


INTRODUCTION

DJV- 410 is a quad multi-viewer video wall controller for LCD TVs, ultra-narrow LCD screens and HD projectors. It supports a 4-way HD signal input connected to 1 LCD TVs or any other display device. It has 5 kinds of models which can be customized to suit the user's specific needs. Any product using High-Definition processing chip do support 1080 input and output signals, interface includes 1 HD output and 4 HD input.

The product is simple and easy to operate because its multi-viewer processor which is designed with infrared control. It can also be accessed through buttons with one-click shortcut controlfunction

DJV- 410 5 Modes



Mode 1: Quad screen.

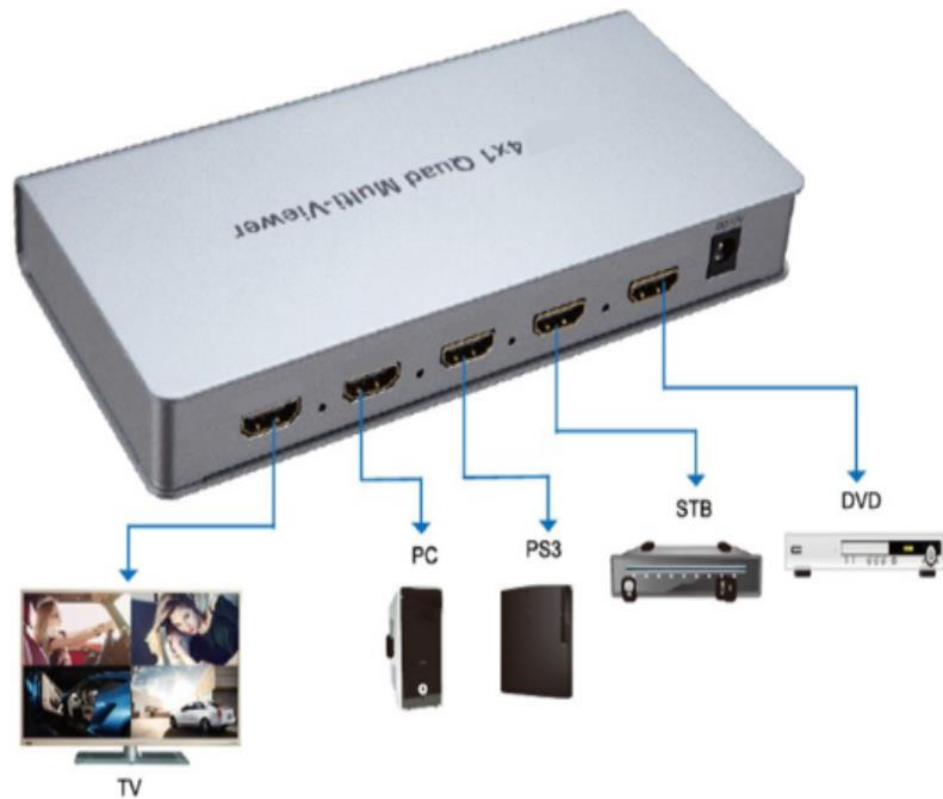
Mode 2: One main and triple small screen

Mode 3: One screen

Mode 4: Double screen

Mode 5: Quad screen.

KEY FEATURES:



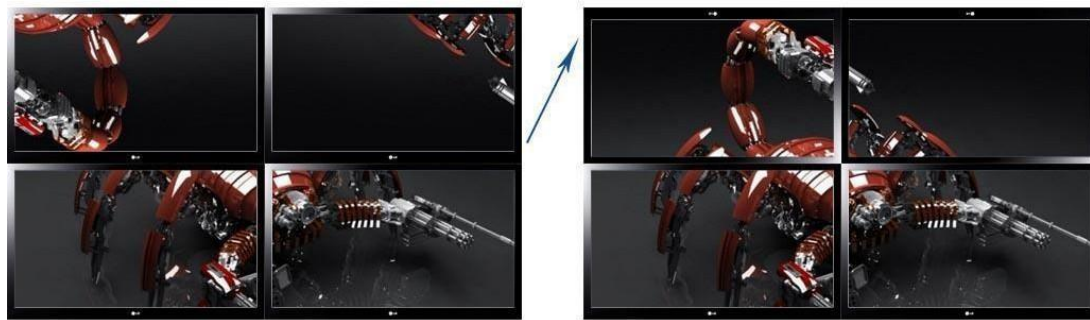
Quad-screen processing

DJV- 410 has a multi-viewer processor that supports 4-way HD signal inputs, 1 LCD TV connections or display devices such as projectors, DLP, plasma and other display units. These 4 input signals are spliced into a large screen. **DJV- 410** can be customized to other mosaic pattern according to the user's requirements.

All the video input signals can be switched with audio interfaces to achieve a synchronized output.

180-degree Image Flip

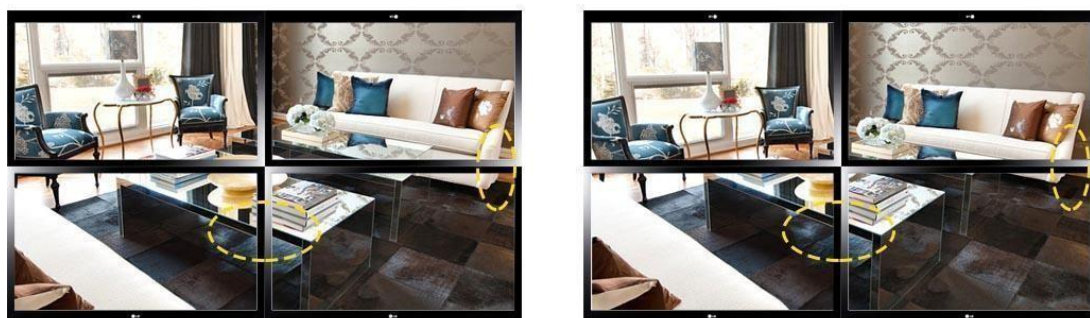
DJV- 410 has image flip function for different display and signals. It is different from other splicing products. Users use LCD TV for multi-viewer process. It also reduces the image distortion caused by the seam. An example is as shown below:



180° Image Flip Function

Edge blanking function

Without the edge blank function, all the display unit joints would have a frame gap which would make the image rip up in vision and feel unnatural. The image would be more natural and lively with the edge blanking function. An example of the transformation and its correction is as shown below.



(Before)

(After)

Edge Blanking Function

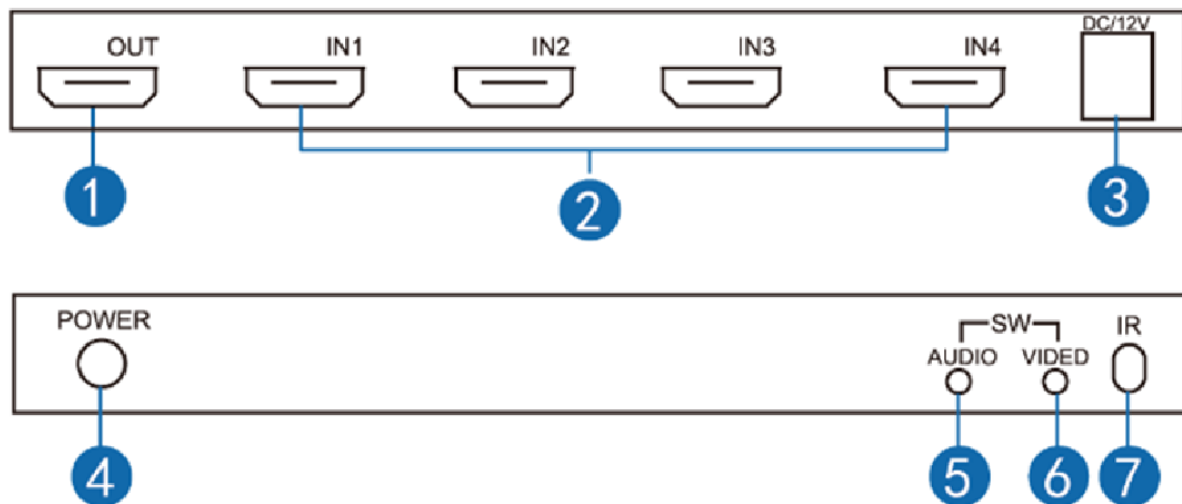
Remote control function

The remote control function is specifically customized for the **DJV- 410**. All functions such as multi-viewer processor settings, switching and adjusting can be done on the remote control. It has an ultra-sensitive design and a remote control distance up to 10 meters.



SPECIFICATIONS

Name	Spec
Interface	HD
Resolution	Up to 1920*1080@60Hz
Input port	HD*4
Output port	HD*1
Weight	350g
Audio output format	PCM2
Power	DC 12V /2A
Dimension	190mm(L)x85mm(W)x25mm(H)

SOLUTION DIAGRAM

1. HD Output interface
2. HD Input interface
3. DC/12V power port
4. Power LED light
5. Audio mode
6. Video mode
7. Remote control light