



Video Wall Player **DJV-200**

DJV-200 Series Video Wall Controller

INTRODUCTION

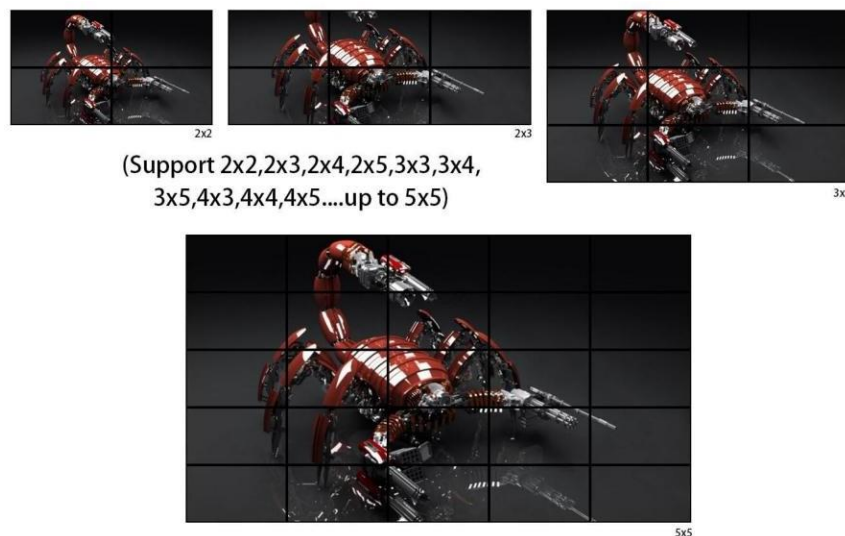
DJV-200 is a video wall controller product aimed at LCD TVs, specifically Ultra-narrow side LCD screens. The processor can be customized with 2 to 25 HD output stitching according to the user preferences and can customize unlimited joints by cascade. The product use high-definition processing chip so it can support 1080P signal for input and output. It also supports 1 VGA, 1 USB, 1 HD and 1 composite video for input. All the input signals can be switched into multi-screen display with related video and audio simultaneously. **DJV-200** can be controlled with infrared remote control, case button control or RS-232. It is easy to operate. Users can use a one-click quick control and global function control for easy operation.



KEY FEATURES:

Multi-screen model

DJV-200 adopts a modular design that enables users to increase or decrease the output modules. A single machine can have maximum of 25 HD joint signal output and compatible with DVI protocol. It can have unlimited joints with cascade connection. Based on the user's preferences, the machine can be customized for various kinds of multi-screen patterns such as 2x2, 3x3, 1x2, 2x3, 3x2, 2x4, 4x2, 2x5, 5x2 etc.



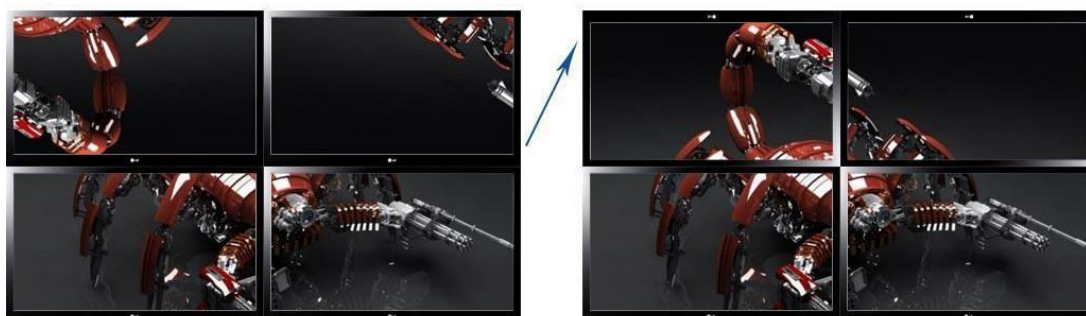
Input Source

It support 4 input signals which consists of 1 composite video, 1 VGA, 1 HD and 1 USB. The HD and USB interface has an audio/video decoding function. The composite video and VGA signal adds relevant audio interface to the product. What's more, all input video signals can be synchronized with the audio output.



180-degree Image Flip

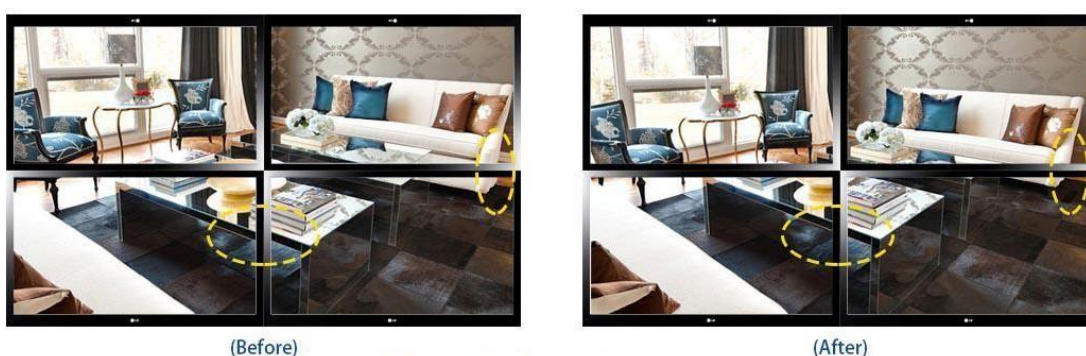
DJV-200 has a 180-degree image flip function for different display. It is different from other splicing products. Users use LCD TV for multi-screen process, an up row of LCD TVs rotated through 180 degrees which significantly reduce the LCD splicing gap. It also reduces the image distortion caused by the seam. An example is as shown below:



180° Image Flip Function

Edge blanking function

Without the edge blank function, all the display unit joints would have a frame gap which would make the image rip up in vision and feel unnatural. The image would be more natural and lively with the edge blanking function. An example of the transformation and its correction is as shown below.



Edge Blanking Function

USB transmit function

This product supports USB transmit and joint function. Users can set the video or image joint pattern play. It's simple and useful. There is no need for an extra allocation on a computer or other broadcast equipment. You only need to insert a U disk at the USB interface of our product multi-screen process

- Support video, image, MP3 and TXT document
- Video source can be selected
- All video supports sequential play or cycle, pause, speed and accessible programlist

Keys Function (on the face panel)

- Shortcut switch VIDEO, USB, HD and VGA
- Shortcut switch between joint and un-joint mode
- Adjustment of edge blanking
- Volume of audio output control
- Brightness, contrast ratio and color saturation can be adjusted
- Video Speed, next song and selection of program at USBconnection
- Other functions of multi-screen processor



Key Board Control

Remote control function

The remote control is specifically customized for **DJV-200** multi-screen processor. Each key on the remote controller is in conformity with different functions. You can't get this controller in the market. The remote controller adopts a super-sensitive design with a remote distance between 7 to 10 meters. It can perform all functions such settings, switch and adjustment for a multi-screen processor. The picture below is a remote controller



SPECIFICATIONS

Name	Specification
Input signal	
VGA	HD15 interface and link with 1 audio interface of 3.5 Support 640*480/85HZ to 1920*1200/60HZ
HD	HD DVI 1.0 HD embed audio
Video	Automatic identification the system of NTSC, PAL and SECAM link with 1 audio interface of 3.5
USB	Standard interface of 2.0,can insert U disk, embed audio; Support video, image, MP3 and TXT documents
Output signal	
HD interface	4 HD output, support joint pattern of 2*2,1*4,4*1; Support customizing output signal of 2 to 25; 1920*1080P/60HZ, 1280*720, 60HZ;
Audio	3.5 Audio interface, support left and right channels and stereo, AV signal switch synchronously
others	
Control mode	RS232, IR , case key
Power supply	AC: 100 to 240 V
Joint pattern	Quad standard joint, single machine customize joint of 2 to 25
Power	20W
Case size	
Dimensions(1U)	1U 19 inch standard crate,442mm(L)*45mm(H)*242mm(W)
Weight(1U)	2.5KG

SOLUTION DIAGRAM